

# ON THE WAY TO EUROPE'S MOST MODERN BIOREFINERY

## HERE BIOECONOMY IS SCALED FOR MARKETS.

"The BioEconomy topic offers enormous future potential for Saxony-Anhalt. With the first joint state appearance under the umbrella of the IMG, we have succeeded in creating a promising boost for the BioEconomy international location marketing for Saxony-Anhalt. We would be pleased if this could also be actively accompanied politically in the future. This way we could achieve an even higher impact together."

Prof. Dr. Matthias Zscheile, Cluster Manager of the BioEconomy Cluster e.V.

> A high-tech location - companies on site

> USPs - Location for biorefineries

> IMG - Your Partner: Services and Network

### A high-tech location - companies on site

Reliability, flexibility and speed offer investors ideal location conditions in Saxony-Anhalt. These companies are already convinced:

Further companies on site

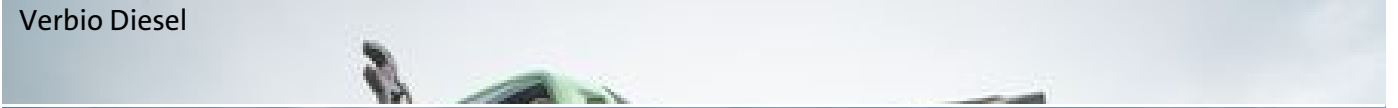
Crop Energies

Green fuels

Nordzucker



Verbio Diesel



Verbio Ethanol



Bio-Oil Plants



Biomethane



[> back to top](#)

## Location for biorefineries - USPs of Saxony-Anhalt

Good reasons - advantages of the bio-economy location Saxony-Anhalt. In Saxony-Anhalt, everything interlocks: availability of raw materials, existing competencies, industries, infrastructure and the research landscape.

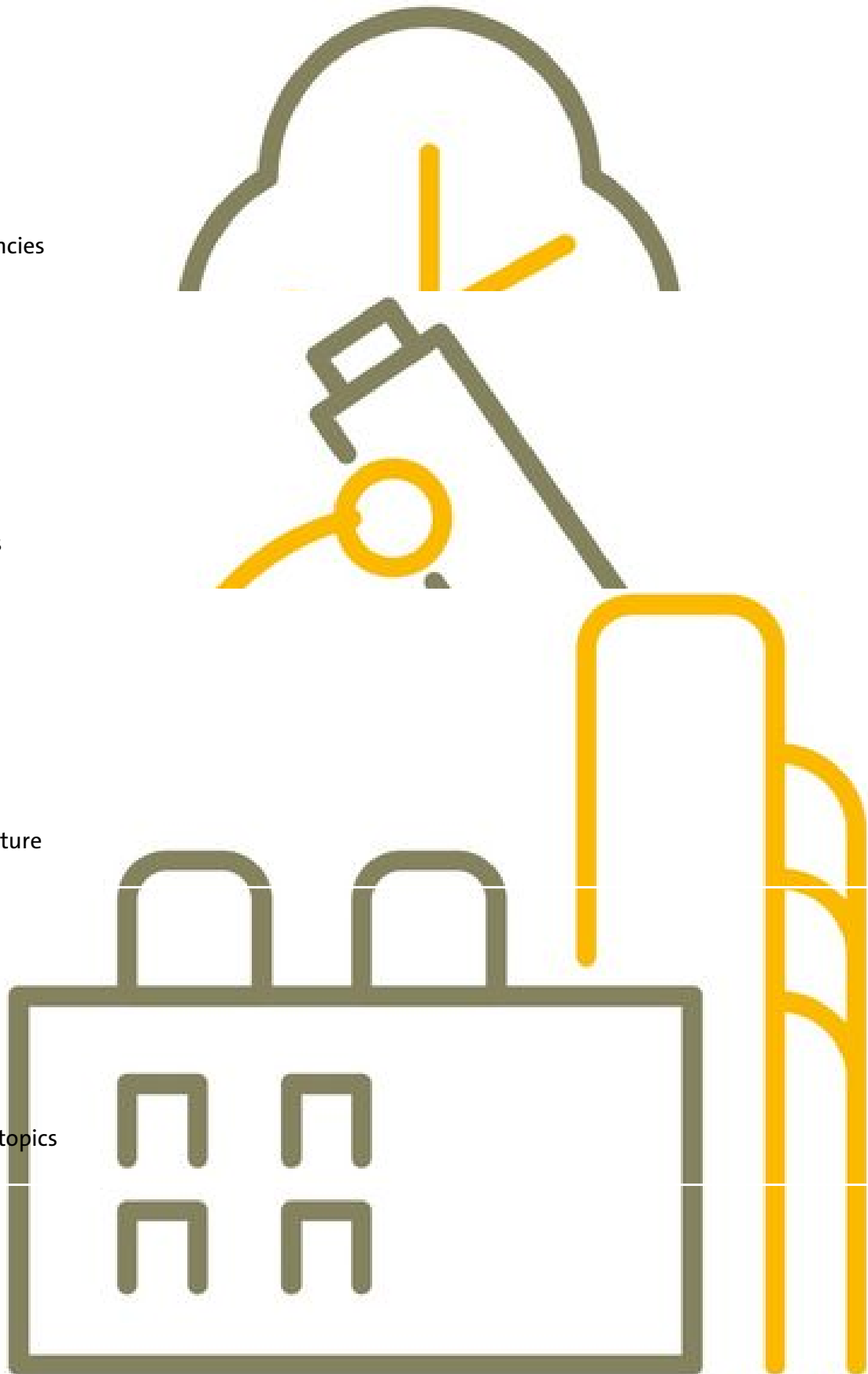
Raw materials

Competencies

Industries

Infrastructure

Research topics



## Transfer and Research Infrastructure

- Fraunhofer Center for Chemical-Biotechnological Processes (CBP)
- Fraunhofer Pilot Plant Center for Polymer Synthesis and Processing (PAZ)
- Bio Centre at Martin Luther University
- Helmholtz Centre for Environmental Research (UFZ)
- ppm Pilot Plant Technology Magdeburg e. V., Experimental pilot plant for oils/fats and proteins from renewable resources.
- The Polymer Competence Centre Halle-Merseburg
- Science Campus for Plant-Based Bioeconomy
- Zeitz Chemical and Industrial Park
- Chemical Park Bitterfeld-Wolfen
- InfraLeuna GmbH

> back to top

## Universities and non-university research institutes

- Martin-Luther-University Halle-Wittenberg
- Otto-von-Guericke-University Magdeburg
- Fraunhofer Institut for Mechanics of Materials IWMS
- Fraunhofer Institut for Cell Therapy and Immunology IZI
- Max Planck Institut for Dynamics of Complex Technical Systems Magdeburg
- Leibniz Institut for Plant Biochemistry
- Anhalt University of Applied Sciences
- Magdeburg-Stendal University of Applied Sciences

## International Business Services: IMG - Your Partner

We create the right connections. Our partners in the internationalisation of your activities are also your partners. We work closely with competent and experienced partners to find an individual solution for your needs - in Saxony-Anhalt and in the international target market.



Partner network of IMG

### The right connection



Events

On site with IMG



IMG Service

YOUR success in Saxony-Anhalt.

# Partner network of IMG

Saxony-Anhalt has a broad network of institutions, companies and research facilities with know-how in the bio-economy - 75 partners are organised in the BioEconomy Cluster alone.

- BioEconomy Cluster
- BMD GmbH - Life Science Agency Saxony-Anhalt
- Biozentrum Halle (Saale)
- InfraLeuna GmbH
- Zeitz Chemical and Industrial Park
- Chemical Park Bitterfeld-Wolfen
- Technology and start-up centre Bitterfeld-Wolfen
- Polykum e.V.
- Holzimpulszentrum Service UG Rottleberode
- Economic Development Agency Nebraska
- Circular Biobased Delta

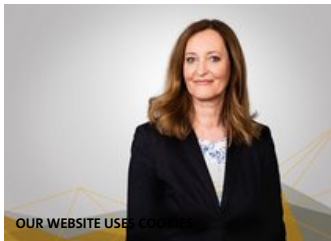
## Investor Service

- Support in all questions of settlement, expansion investments and investment projects
- Information on available commercial space
- Information on available skilled workers
- Information on funding and financing opportunities
- Establishing contacts with all relevant partners in the region
- With the help of our networks in business and politics as well as databases, you have access to all relevant information on the region's growth industries
- Level of support in accordance with maximum EU funding rates: small companies: up to 30%, medium-sized companies: up to 20%, large companies: up to 10%

Add page



## Contact



**Dorrit Zischka**  
Senior Manager Bioeconomy  
+49 391 568 99 27  
dorrit.zischka@img-sachsen-anhalt.de

V-Card

## Fact Sheet



HERE Bioeconomy is scaled for markets.

(579 KB)

Settings Cookies & Privacy

## HERE+NOW.



impuls magazine Chemistry & Bioeconomy

## Contact



**Ines Massih-Richter**  
Coordinator Services  
Tel.: +49 391 568 99 91  
ines.massih-richter@img-sachsen-anhalt.de

V-Card